

## Image Segmentation II

- Variational Image Segmentation
- Snakes
- Snakes: External Energy
- Snakes: Internal Energy
- Snakes: Gradient Descent
- Some Comments on the Snakes
- Problem with Initialization
- Possible solutions
- The Mumford-Shah Approach
- The Piecewise Constant Mumford-Shah
- Discrete Approximation
- Solution via Graph Cuts
- Ernst Ising
- The Piecewise Constant Mumford-Shah
- Mathematical Insights
- Euler-Lagrange Equations
- Euler-Lagrange Equations
- Euler-Lagrange Equations
- Minimizing the Mumford-Shah Functional
- Gradient Descent
- Gradient Descent with Length Regularity
- Implementations
- 2-normal Segmentations
- 2-normal Segmentations
- 2-normal Segmentations
- Multiscale Implementation

# Image Segmentation II: Variational Approaches

# Variational Image Segmentation

We already studied a number of algorithms for image segmentation. These were based on two complementary concepts:

- Detection of discontinuities of the brightness function, or
- Grouping pixels of similar brightness (color, texture, etc.)

Most of the approaches discussed so far lack a clear optimization criterion: Edge regions are heuristically fused to connected lines (Perkins, Canny), or pixels are iteratively merged to regions (region merging, region growing). Toward the end of the 1980s, the first variational formulations for image segmentation emerged. The two most prominent ones are:

- the **Snakes** (Kass, Witkin, Terzopoulos, *Int. J. of Comp. Vision* '88),
- the **Mumford-Shah Functional** (Mumford, Shah, *J. Appl. Math.* '89).

## Image Segmentation II

### ● Variational Image Segmentation

- Snakes
- Snakes: External Energy
- Snakes: Internal Energy
- Snakes: Gradient Descent
- Some Comments on the Snakes
- Problem with Initialization
- Possible solutions
- The Mumford-Shah Approach
- The Piecewise Constant Mumford-Shah
- Discrete Approximation
- Solution via Graph Cuts
- Ernst Ising
- The Piecewise Constant Mumford-Shah
- Mathematical Insights
- Euler-Lagrange Equations
- Euler-Lagrange Equations
- Euler-Lagrange Equations
- Minimizing the Mumford-Shah Functional
- Gradient Descent
- Gradient Descent with Length Regularity
- Implementations
- 2-normal Segmentations
- 2-normal Segmentations
- 2-normal Segmentations
- Multiscale Implementation

# Snakes

In 1988, Kass, Witkin and Terzopoulos proposed to minimize the following functional:

$$E(C) = E_{ext}(C) + E_{int}(C)$$

with an external energy:

$$E_{ext}(C) = - \int_0^1 |\nabla I(C(s))|^2 ds$$

and an internal energy

$$E_{int}(C) = \int_0^1 \left\{ \frac{\alpha}{2} |C_s(s)|^2 + \frac{\beta}{2} |C_{ss}(s)|^2 \right\} ds$$

Here,  $I : \Omega \subset \mathbb{R}^2 \rightarrow \mathbb{R}$  denotes the input grayvalue image, and  $C : [0, 1] \rightarrow \Omega$  denotes a parametric curve.  $C_s$  and  $C_{ss}$  denote the first and second derivative of the curve  $C$  with respect to its parameter  $s$ .

# Snakes: External Energy

The external energy:

$$E_{ext}(C) = - \int_0^1 |\nabla I(C)|^2 ds$$

measures for any given curve  $C$  how well it coincides with the maxima of the brightness gradient  $|\nabla I|$ . Thus rather than first searching for these maxima and then grouping them to a curve one defines a cost function which measures the “edge strength” along any conceivable curve. Subsequently, the optimal curve  $\hat{C}$  is determined by minimizing the total energy:

$$\hat{C} = \arg \min_C E(C)$$

Gradient descent on this energy induces an evolution of the curve toward locations of large image gradient.

## Image Segmentation II

- Variational Image Segmentation
- Snakes
- Snakes: External Energy
- Snakes: Internal Energy
- Snakes: Gradient Descent
- Some Comments on the Snakes
- Problem with Initialization
- Possible solutions
- The Mumford-Shah Approach
- The Piecewise Constant Mumford-Shah
- Discrete Approximation
- Solution via Graph Cuts
- Ernst Ising
- The Piecewise Constant Mumford-Shah
- Mathematical Insights
- Euler-Lagrange Equations
- Euler-Lagrange Equations
- Euler-Lagrange Equations
- Minimizing the Mumford-Shah Functional
- Gradient Descent
- Gradient Descent with Length Regularity
- Implementations
- 2-normal Segmentations
- 2-normal Segmentations
- 2-normal Segmentations
- Multiscale Implementation

# Snakes: Internal Energy

The internal energy corresponds to a regularizer which induces some smoothness on the computed curves:

$$E_{int}(C) = \int_0^1 \left\{ \frac{\alpha}{2} |C_s(s)|^2 + \frac{\beta}{2} |C_{ss}(s)|^2 \right\} ds$$

It consists of two components, weighted by parameters  $\alpha \geq 0$  and  $\beta \geq 0$ , which penalize the elastic length and stiffness of the curve. Therefore, minimizing the total energy

$$E(C) = E_{ext}(C) + E_{int}(C)$$

leads to curves which are both short/smooth and pass through locations of large gradient.

## Image Segmentation II

- Variational Image Segmentation
- Snakes
- Snakes: External Energy
- Snakes: Internal Energy
- Snakes: Gradient Descent
- Some Comments on the Snakes
- Problem with Initialization
- Possible solutions
- The Mumford-Shah Approach
- The Piecewise Constant Mumford-Shah
- Discrete Approximation
- Solution via Graph Cuts
- Ernst Ising
- The Piecewise Constant Mumford-Shah
- Mathematical Insights
- Euler-Lagrange Equations
- Euler-Lagrange Equations
- Euler-Lagrange Equations
- Minimizing the Mumford-Shah Functional
- Gradient Descent
- Gradient Descent with Length Regularity
- Implementations
- 2-normal Segmentations
- 2-normal Segmentations
- 2-normal Segmentations
- Multiscale Implementation

# Snakes: Gradient Descent

The snakes energy

$$E(C) = - \int_0^1 |\nabla I(C)|^2 ds + \int_0^1 \left\{ \frac{\alpha}{2} |C_s(s)|^2 + \frac{\beta}{2} |C_{ss}(s)|^2 \right\} ds$$

is of the canonical form

$$E(C) = \int \mathcal{L}(C, C_s, C_{ss}) ds$$

Therefore the corresponding Euler-Lagrange equation is given by:

$$\frac{dE}{dC} = \frac{\partial \mathcal{L}}{\partial C} - \frac{d}{ds} \frac{\partial \mathcal{L}}{\partial C_s} + \frac{d^2}{ds^2} \frac{\partial \mathcal{L}}{\partial C_{ss}} = -\nabla |\nabla I(C)|^2 - \alpha C_{ss} + \beta C_{ssss} = 0.$$

And consequently, the gradient descent equation reads:

$$\frac{\partial C(s, t)}{\partial t} = - \frac{dE(C)}{dC} = \nabla |\nabla I(C)|^2 + \alpha C_{ss} - \beta C_{ssss}$$

## Image Segmentation II

- Variational Image Segmentation
- Snakes
- Snakes: External Energy
- Snakes: Internal Energy
- Snakes: Gradient Descent
- Some Comments on the Snakes
- Problem with Initialization
- Possible solutions
- The Mumford-Shah Approach
- The Piecewise Constant Mumford-Shah
- Discrete Approximation
- Solution via Graph Cuts
- Ernst Ising
- The Piecewise Constant Mumford-Shah
- Mathematical Insights
- Euler-Lagrange Equations
- Euler-Lagrange Equations
- Euler-Lagrange Equations
- Minimizing the Mumford-Shah Functional
- Gradient Descent
- Gradient Descent with Length Regularity
- Implementations
- 2-normal Segmentations
- 2-normal Segmentations
- 2-normal Segmentations
- Multiscale Implementation

# Some Comments on the Snakes

- The **Snakes** are among the most groundbreaking publications in image processing. To date (Dec '11) they have acquired more than 12000 citations. In 2005, the three authors were awarded an academy award for realistic simulations of textiles.
- The **Snakes** are considered the first variational approach to image segmentation.
- In comparison to modern segmentation methods, however, they are only of limited practical use:
  - ◆ Real images typically have very many gradient maxima which give rise to respective local minima in the cost function  $E$ . As a consequence, the curve must be initialized sufficiently close to the desired solution. Alternatively one can presmooth the input image (to remove spurious local minima). Yet, the smoothing also removes possibly important edge information.
  - ◆ The evolution of parametric curves is a numerically challenging problem as one needs to avoid self-intersections and instabilities.

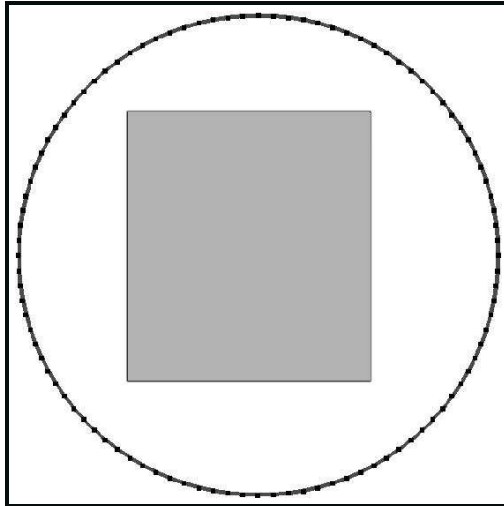
## Image Segmentation II

- Variational Image Segmentation
- Snakes
- Snakes: External Energy
- Snakes: Internal Energy
- Snakes: Gradient Descent
- Some Comments on the Snakes
- Problem with Initialization
- Possible solutions
- The Mumford-Shah Approach
- The Piecewise Constant Mumford-Shah
- Discrete Approximation
- Solution via Graph Cuts
- Ernst Ising
- The Piecewise Constant Mumford-Shah
- Mathematical Insights
- Euler-Lagrange Equations
- Euler-Lagrange Equations
- Euler-Lagrange Equations
- Minimizing the Mumford-Shah Functional
- Gradient Descent
- Gradient Descent with Length Regularity
- Implementations
- 2-normal Segmentations
- 2-normal Segmentations
- 2-normal Segmentations
- Multiscale Implementation

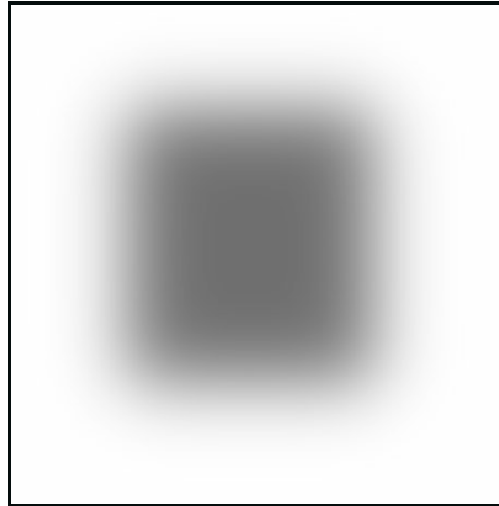
# Problem with Initialization

## Image Segmentation II

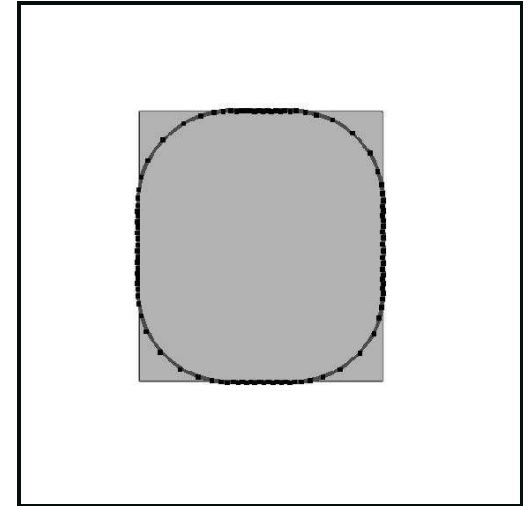
- Variational Image Segmentation
- Snakes
- Snakes: External Energy
- Snakes: Internal Energy
- Snakes: Gradient Descent
- Some Comments on the Snakes
- Problem with Initialization
- Possible solutions
- The Mumford-Shah Approach
- The Piecewise Constant Mumford-Shah
- Discrete Approximation
- Solution via Graph Cuts
- Ernst Ising
- The Piecewise Constant Mumford-Shah
- Mathematical Insights
- Euler-Lagrange Equations
- Euler-Lagrange Equations
- Euler-Lagrange Equations
- Minimizing the Mumford-Shah Functional
- Gradient Descent
- Gradient Descent with Length Regularity
- Implementations
- 2-normal Segmentations
- 2-normal Segmentations
- 2-normal Segmentations
- Multiscale Implementation



Input (square) and  
initial curve



smoothed input image



final segmentation

Presmoothing makes the edge information “visible” from a larger distance. Yet it removes finer structures like the corners of the square.

(Author: D. Cremers)



# Possible solutions

Local minima of the snakes can be avoided in various ways:

- One extends the cost functional by an additional **balloon energy**

$$E_{\text{balloon}}(C) = \gamma \int_{\Omega_{\text{int}}(C)} d^2x$$

(*L. Cohen & I. Cohen, Balloons, 1991*), which induces the curve to **contract (for  $\gamma > 0$ )**, or to **expand (for  $\gamma < 0$ )**, because the balloon energy simply measures the area of the region  $\Omega_{\text{int}}$  inside the curve  $C$ .

- One minimizes the snakes energy in a **coarse-to-fine manner**, starting with a coarse (smoothed image) and iteratively reducing the smoothness starting from the previously estimated curve. (See for example *Blake & Zisserman, Graduated Non-Convexity, 1987*).
- One reformulates the optimization problem in a way which allows to compute **globally optimal solutions** (using graph cut methods or convex relaxation methods).

# The Mumford-Shah Approach

In 1989, D. Mumford and J. Shah proposed to segment an input image  $I : \Omega \subset \mathbb{R}^2 \rightarrow \mathbb{R}$  by minimizing the functional:

$$E(u, C) = \int_{\Omega} (I(x) - u(x))^2 dx + \lambda \int_{\Omega \setminus C} |\nabla u(x)|^2 dx + \nu |C|,$$

jointly with respect to an approximation  $u : \Omega \rightarrow \mathbb{R}$  and a one-dimensional discontinuity set  $C \subset \Omega$ . The three terms have the following meaning:

- The data term assures that  $u$  is a faithful approximation of the input  $I$ .
- The smoothness term, weighted by  $\lambda > 0$ , assures that  $u$  is smooth everywhere except for the discontinuity set.
- A further regularizer, weighted by  $\nu > 0$ , assures that this discontinuity set has minimal length  $|C|$ .

The minimizer of the Mumford-Shah functional is a **piecewise smooth approximation** of the input image  $I$ .

## Image Segmentation II

- Variational Image Segmentation
- Snakes
- Snakes: External Energy
- Snakes: Internal Energy
- Snakes: Gradient Descent
- Some Comments on the Snakes
- Problem with Initialization
- Possible solutions
- The Mumford-Shah Approach
- The Piecewise Constant Mumford-Shah
- Discrete Approximation
- Solution via Graph Cuts
- Ernst Ising
- The Piecewise Constant Mumford-Shah
- Mathematical Insights
- Euler-Lagrange Equations
- Euler-Lagrange Equations
- Euler-Lagrange Equations
- Minimizing the Mumford-Shah Functional
- Gradient Descent
- Gradient Descent with Length Regularity
- Implementations
- 2-normal Segmentations
- 2-normal Segmentations
- 2-normal Segmentations
- Multiscale Implementation

# The Piecewise Constant Mumford-Shah

For increasing values of the weight  $\lambda$ , the approximation  $u$  is forced to be smoother and smoother outside of  $C$ . In the limit  $\lambda \rightarrow \infty$  we obtain a **piecewise constant approximation** of the image  $I$ :

$$E(u, C) = \int_{\Omega} (I(x) - u(x))^2 dx + \nu_0 |C|,$$

where  $u(x)$  is constant in each of the regions separated by the boundary  $C$ . If we denote these regions by  $\{\Omega_1, \dots, \Omega_n\}$  and the constants by  $u_i$ , this can be rewritten as:

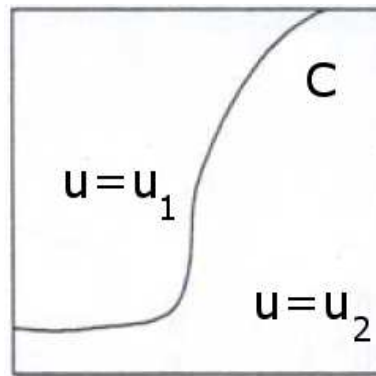
$$E(\{u_1, \dots, u_n\}, C) = \sum_{i=1}^n \int_{\Omega_i} (I(x) - u_i)^2 dx + \nu_0 |C|,$$

For the case of **two regions**, a **spatially discrete** formulation of this energy is known as the **Ising model** (E. Ising 1925, W. Lenz 1920, W. Heisenberg 1928).

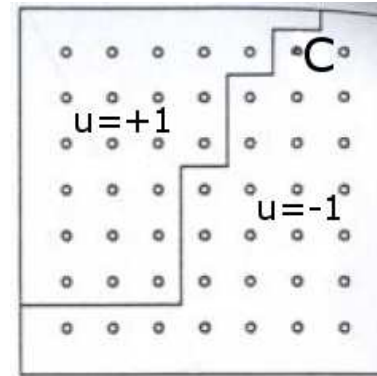
## Image Segmentation II

- Variational Image Segmentation
- Snakes
- Snakes: External Energy
- Snakes: Internal Energy
- Snakes: Gradient Descent
- Some Comments on the Snakes
- Problem with Initialization
- Possible solutions
- The Mumford-Shah Approach
- The Piecewise Constant Mumford-Shah
- Discrete Approximation
- Solution via Graph Cuts
- Ernst Ising
- The Piecewise Constant Mumford-Shah
- Mathematical Insights
- Euler-Lagrange Equations
- Euler-Lagrange Equations
- Euler-Lagrange Equations
- Minimizing the Mumford-Shah Functional
- Gradient Descent
- Gradient Descent with Length Regularity
- Implementations
- 2-normal Segmentations
- 2-normal Segmentations
- 2-normal Segmentations
- Multiscale Implementation

# Discrete Approximation



Continuous representation



discrete representation

The length of the curve  $C$  can be approximated as:

$$|C| \approx \frac{1}{2} \sum_{i,j} \left( \frac{u^i - u^j}{2} \right)^2 = \frac{1}{8} \sum_{i,j} (u^i)^2 + (u^j)^2 - 2u^i u^j = \text{const.} - \frac{1}{4} \sum_{i,j} u^i u^j,$$

where summation is done over all neighboring pixels  $i$  and  $j$ . This leads to:

$$E(u) = \sum_i (I^i - u^i)^2 - \frac{\nu}{4} \sum_{i,j} u^i u^j.$$

Ernst Ising, Beitrag zur Theorie des Ferromagnetismus, *Zeitschrift f. Physik* 1925.

## Image Segmentation II

- Variational Image Segmentation
- Snakes
- Snakes: External Energy
- Snakes: Internal Energy
- Snakes: Gradient Descent
- Some Comments on the Snakes
- Problem with Initialization
- Possible solutions
- The Mumford-Shah Approach
- The Piecewise Constant Mumford-Shah
- Discrete Approximation
- Solution via Graph Cuts
- Ernst Ising
- The Piecewise Constant Mumford-Shah
- Mathematical Insights
- Euler-Lagrange Equations
- Euler-Lagrange Equations
- Euler-Lagrange Equations
- Minimizing the Mumford-Shah Functional
- Gradient Descent
- Gradient Descent with Length Regularity
- Implementations
- 2-normal Segmentations
- 2-normal Segmentations
- 2-normal Segmentations
- Multiscale Implementation

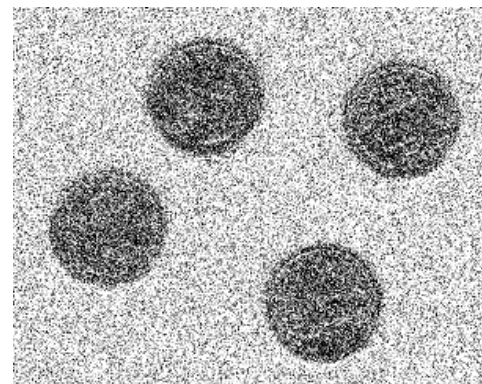
# Solution via Graph Cuts

## Image Segmentation II

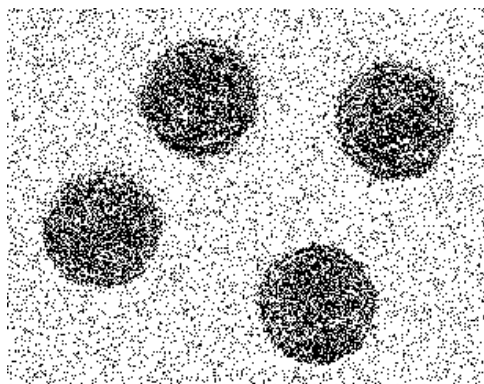
- Variational Image Segmentation
- Snakes
- Snakes: External Energy
- Snakes: Internal Energy
- Snakes: Gradient Descent
- Some Comments on the Snakes
- Problem with Initialization
- Possible solutions
- The Mumford-Shah Approach
- The Piecewise Constant Mumford-Shah
- Discrete Approximation
- **Solution via Graph Cuts**
- Ernst Ising
- The Piecewise Constant Mumford-Shah
- Mathematical Insights
- Euler-Lagrange Equations
- Euler-Lagrange Equations
- Euler-Lagrange Equations
- Minimizing the Mumford-Shah Functional
- Gradient Descent
- Gradient Descent with Length Regularity
- Implementations
- 2-normal Segmentations
- 2-normal Segmentations
- 2-normal Segmentations
- Multiscale Implementation



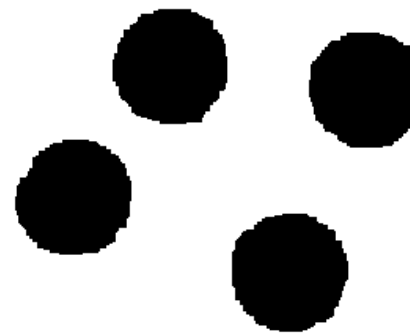
Original  $f$



noisy:  $I = f + \eta$



thresholding:  $I > \theta$



opt. reconstr.:  $\arg \min E(u)$

Minimization of the discrete two-region model using graph cuts  
(Author: Thomas Schoenemann)

# Ernst Ising



1925



1995

Ernst Ising \* 1900 in Cologne, † 1998 in Peoria, Illinois)

Doctoral thesis with Wilhelm Lenz in Hamburg, important contributions to the theory of ferromagnetism, phase transitions, etc.

## Image Segmentation II

- Variational Image Segmentation
- Snakes
- Snakes: External Energy
- Snakes: Internal Energy
- Snakes: Gradient Descent
- Some Comments on the Snakes
- Problem with Initialization
- Possible solutions
- The Mumford-Shah Approach
- The Piecewise Constant Mumford-Shah
- Discrete Approximation
- Solution via Graph Cuts
- Ernst Ising
- The Piecewise Constant Mumford-Shah
- Mathematical Insights
- Euler-Lagrange Equations
- Euler-Lagrange Equations
- Euler-Lagrange Equations
- Minimizing the Mumford-Shah Functional
- Gradient Descent
- Gradient Descent with Length Regularity
- Implementations
- 2-normal Segmentations
- 2-normal Segmentations
- 2-normal Segmentations
- Multiscale Implementation

# The Piecewise Constant Mumford-Shah

For  $\lambda \rightarrow \infty$  one obtains a special case of the Mumford-Shah functional known as the piecewise constant approximation:

$$E(\{u_1, \dots, u_n\}, C) = \sum_{i=1}^n \int_{\Omega_i} (I(x) - u_i)^2 dx + \nu |C|,$$

This functional is of interest for several reasons:

- It is the spatially continuous generalization of the discrete **spin glass models** (Lenz 1920, Ising 1925, Potts 1956, ...).
- It is quite powerful, yet mathematically well understood.

In the following, we will therefore discuss several aspects of this functional in more detail:

- Some important mathematical results.
- Euler-Lagrange equations and possible implementations.
- A statistical interpretation.

## Image Segmentation II

- Variational Image Segmentation
- Snakes
- Snakes: External Energy
- Snakes: Internal Energy
- Snakes: Gradient Descent
- Some Comments on the Snakes
- Problem with Initialization
- Possible solutions
- The Mumford-Shah Approach
- The Piecewise Constant Mumford-Shah
- Discrete Approximation
- Solution via Graph Cuts
- Ernst Ising
- The Piecewise Constant Mumford-Shah
- Mathematical Insights
- Euler-Lagrange Equations
- Euler-Lagrange Equations
- Euler-Lagrange Equations
- Minimizing the Mumford-Shah Functional
- Gradient Descent
- Gradient Descent with Length Regularity
- Implementations
- 2-normal Segmentations
- 2-normal Segmentations
- 2-normal Segmentations
- Multiscale Implementation

# Mathematical Insights

- For a given boundary  $C$ , the minimizing constants  $u_i$  are uniquely determined. They are given by the average brightness of each region:

$$\frac{\partial E}{\partial u_i} = 2 \int_{\Omega_i} (I(x) - u_i) dx = 0 \Rightarrow u_i = \frac{\int_{\Omega_i} I(x) dx}{\int_{\Omega_i} dx}$$

As a result, the cost function is then merely a function of the boundary  $C$ :  $E(C) \equiv \min_u E(C, u)$ . In particular, the segmentation has the same average gray value as the input image  $I$ .

- **Existence of minima:** There exist minima of the functional  $E(C)$ . The minimizing boundaries  $C$  are closed and differentiable up to discontinuities of the following type:
  - ◆ Three boundary segments meet at equal angles ( $120^\circ$ ).
  - ◆ The boundary meets the domain boundary at a  $90^\circ$  angle.
- Minima of  $E(C)$  are generally not unique.

## Image Segmentation II

- Variational Image Segmentation
- Snakes
- Snakes: External Energy
- Snakes: Internal Energy
- Snakes: Gradient Descent
- Some Comments on the Snakes
- Problem with Initialization
- Possible solutions
- The Mumford-Shah Approach
- The Piecewise Constant Mumford-Shah
- Discrete Approximation
- Solution via Graph Cuts
- Ernst Ising
- The Piecewise Constant Mumford-Shah
- **Mathematical Insights**
- Euler-Lagrange Equations
- Euler-Lagrange Equations
- Euler-Lagrange Equations
- Minimizing the Mumford-Shah Functional
- Gradient Descent
- Gradient Descent with Length Regularity
- Implementations
- 2-normal Segmentations
- 2-normal Segmentations
- 2-normal Segmentations
- Multiscale Implementation



# Euler-Lagrange Equations

- Unfortunately, the Mumford-Shah functional in its original formulation is not in a **canonical form**, since the variable of interest (the boundary  $C$ ) appears in the integrand.
- There exists an entire research community dedicated to such optimization problems known as **shape optimization** or **shape sensitivity analysis**.
- In the following we will derive the Euler-Lagrange equation using Green's theorem (following S.C. Zhu '95). Assume we are given a general energy of the form

$$E(C) = \int_R f(x, y) dx dy,$$

where  $R$  denotes the region inside a curve  $C$ . Let  $C : [0, 1] \rightarrow \mathbb{R}^2$  be a parametric closed curve, with  $C(s) = (x(s), y(s))$ .

## Image Segmentation II

- Variational Image Segmentation
- Snakes
- Snakes: External Energy
- Snakes: Internal Energy
- Snakes: Gradient Descent
- Some Comments on the Snakes
- Problem with Initialization
- Possible solutions
- The Mumford-Shah Approach
- The Piecewise Constant Mumford-Shah
- Discrete Approximation
- Solution via Graph Cuts
- Ernst Ising
- The Piecewise Constant Mumford-Shah
- Mathematical Insights
- Euler-Lagrange Equations
- Euler-Lagrange Equations
- Euler-Lagrange Equations
- Minimizing the Mumford-Shah Functional
- Gradient Descent
- Gradient Descent with Length Regularity
- Implementations
- 2-normal Segmentations
- 2-normal Segmentations
- 2-normal Segmentations
- Multiscale Implementation

# Euler-Lagrange Equations

Green's Theorem: For a vector field of the form  $\vec{v} = (a(x, y), b(x, y)) \in \mathbb{R}^2$  and a region  $R \subset \mathbb{R}^2$  with boundary  $\partial R \equiv C$  we have:

$$\int_R (\nabla \times \vec{v}) d^2x = \int_{\partial R} \vec{v} ds,$$

where the rotation of  $v$  is defined as  $\nabla \times \vec{v} \equiv \partial_x b - \partial_y a$ . Thus:

$$\int_R (b_x - a_y) dx dy = \int_{\partial R} a dx + b dy$$

Choosing a vector field  $\vec{v}$  such that  $f = (b_x - a_y)$ , we can rewrite the energy as:

$$E(C) = \int_R f(x, y) dx dy = \int_{\partial R} a dx + b dy = \int_0^1 (a\dot{x} + b\dot{y}) ds \equiv \int_0^1 \mathcal{L}(x, \dot{x}, y, \dot{y}) ds.$$

where  $\dot{x} \equiv \frac{dx(s)}{ds}$  and  $\dot{y} \equiv \frac{dy(s)}{ds}$ .

## Image Segmentation II

- Variational Image Segmentation
- Snakes
- Snakes: External Energy
- Snakes: Internal Energy
- Snakes: Gradient Descent
- Some Comments on the Snakes
- Problem with Initialization
- Possible solutions
- The Mumford-Shah Approach
- The Piecewise Constant Mumford-Shah
- Discrete Approximation
- Solution via Graph Cuts
- Ernst Ising
- The Piecewise Constant Mumford-Shah
- Mathematical Insights
- Euler-Lagrange Equations
- Euler-Lagrange Equations
- Euler-Lagrange Equations
- Minimizing the Mumford-Shah Functional
- Gradient Descent
- Gradient Descent with Length Regularity
- Implementations
- 2-normal Segmentations
- 2-normal Segmentations
- 2-normal Segmentations
- Multiscale Implementation

# Euler-Lagrange Equations

The functional

$$E(C) = \int_R f(x, y) dx dy = \int_{\partial R} a dx + b dy = \int_0^1 (a \dot{x} + b \dot{y}) ds \equiv \int_0^1 \mathcal{L}(x, \dot{x}, y, \dot{y}) ds.$$

is equal to an integral along the curve  $C$  and we can compute the functional derivative with respect to  $C(s) = (x(s), y(s))$ :

$$\frac{\partial \mathcal{L}}{\partial x} - \frac{d}{ds} \frac{\partial \mathcal{L}}{\partial \dot{x}} = \frac{\partial a}{\partial x} \dot{x} + \frac{\partial b}{\partial x} \dot{y} - \frac{d}{ds} a = \left( \frac{\partial b}{\partial x} - \frac{\partial a}{\partial y} \right) \dot{y} = f \dot{y}$$

$$\frac{\partial \mathcal{L}}{\partial y} - \frac{d}{ds} \frac{\partial \mathcal{L}}{\partial \dot{y}} = \frac{\partial a}{\partial y} \dot{x} + \frac{\partial b}{\partial y} \dot{y} - \frac{d}{ds} b = \left( -\frac{\partial b}{\partial x} + \frac{\partial a}{\partial y} \right) \dot{x} = -f \dot{x}$$

Geometrically this means:

$$\frac{dE}{dC} = f(x, y) \begin{pmatrix} \dot{y} \\ -\dot{x} \end{pmatrix} = f(x, y) \vec{n}_C \quad \text{wobei } \vec{n}_C = \text{normal vector}$$

## Image Segmentation II

- Variational Image Segmentation
- Snakes
- Snakes: External Energy
- Snakes: Internal Energy
- Snakes: Gradient Descent
- Some Comments on the Snakes
- Problem with Initialization
- Possible solutions
- The Mumford-Shah Approach
- The Piecewise Constant Mumford-Shah
- Discrete Approximation
- Solution via Graph Cuts
- Ernst Ising
- The Piecewise Constant Mumford-Shah
- Mathematical Insights
- Euler-Lagrange Equations
- Euler-Lagrange Equations
- Euler-Lagrange Equations
- Minimizing the Mumford-Shah Functional
- Gradient Descent
- Gradient Descent with Length Regularity
- Implementations
- 2-normal Segmentations
- 2-normal Segmentations
- 2-normal Segmentations
- Multiscale Implementation

# Minimizing the Mumford-Shah Functional

- The above calculation shows that functionals of the form  $E(C) = \int_{R(C)} f(x, y) dx dy$  have the following functional derivative:

$$\frac{\partial E}{\partial C} = f(x, y) \vec{n}_C.$$

- For the piecewise constant Mumford-Shah functional (without boundary length term) and only two regions separated by a curve  $C$  we have:

$$E(C) = \int_{R_i} (I(x) - u_i)^2 dx dy + \int_{R_j} (I(x) - u_j)^2 dx dy,$$

so the functional derivative is given by:

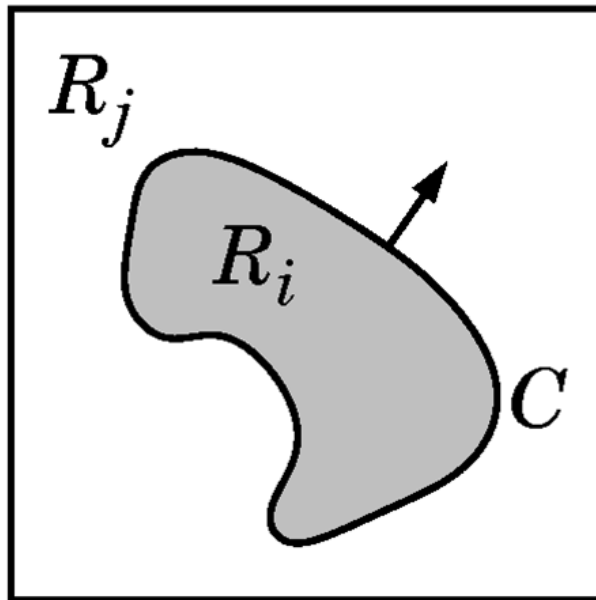
$$\frac{\partial E}{\partial C} = \left( (I(x) - u_i)^2 - (I(x) - u_j)^2 \right) \vec{n}_C,$$

because both regions contribute to the gradient and the normal vector of the outside region is given by  $-\vec{n}_C$ .

# Gradient Descent

The gradient descent equation is therefore:

$$\frac{\partial C(s, t)}{\partial t} = -\frac{dE(C)}{dC} = \left( (I - u_j)^2 - (I - u_i)^2 \right) \vec{n}_C.$$



At each boundary point:

Displace the curve

- toward outside region, if  $|I - u_i| < |I - u_j|$
- inwards, if  $|I - u_i| > |I - u_j|$

Intuitive explanation: If the local brightness  $I(x)$  at point  $x$  is more similar to the average brightness of the interior then  $x$  is assigned to the interior and vice versa. (S.-C. Zhu und A. Yuille, [Region Competition](#), PAMI 1996)

# Gradient Descent with Length Regularity

For the two-region piecewise constant Mumford-Shah with length regularity we get:

$$E(C) = \int_{R_i} (I(x) - u_i)^2 dx dy + \int_{R_j} (I(x) - u_j)^2 dx dy + \nu |C|$$

and the gradient descent reads:

$$\frac{\partial C(s, t)}{\partial t} = -\frac{dE(C)}{dC} = \left( (I - u_j)^2 - (I - u_i)^2 - \nu \kappa_C \right) \vec{n}_C,$$

where  $\kappa_C$  denotes the local curvature of the curve  $C$ . This means that in addition to separating bright and dark areas, the evolution aims at suppressing large curvature of the curve. This is what leads to a local minimization of the boundary length  $|C|$ .

## Image Segmentation II

- Variational Image Segmentation
- Snakes
- Snakes: External Energy
- Snakes: Internal Energy
- Snakes: Gradient Descent
- Some Comments on the Snakes
- Problem with Initialization
- Possible solutions
- The Mumford-Shah Approach
- The Piecewise Constant Mumford-Shah
- Discrete Approximation
- Solution via Graph Cuts
- Ernst Ising
- The Piecewise Constant Mumford-Shah
- Mathematical Insights
- Euler-Lagrange Equations
- Euler-Lagrange Equations
- Euler-Lagrange Equations
- Minimizing the Mumford-Shah Functional
- Gradient Descent
- Gradient Descent with Length Regularity
- Implementations
- 2-normal Segmentations
- 2-normal Segmentations
- 2-normal Segmentations
- Multiscale Implementation

# Implementations

- The paper of Mumford and Shah is focused on aspects of existence and uniqueness of solutions and the study of properties of solutions. For example, it is shown that triple junctions can only exist in the minimizer if the contours meet at equal ( $120^\circ$ ) angles.
- The paper of Mumford and Shah does not propose a numerical implementation for finding minimizers.
- There now exist a number of alternative methods, for example:
  - ◆ *G. Koepfler et al., Multiscale Algorithm*: an implementation of the piecewise constant model in the spirit of region merging.
  - ◆ *D. Cremers et al., Diffusion Snakes*: Implementation of the piecewise smooth and piecewise constant models using closed parametric spline curves (hybrid of Mumford-Shah and snakes).

## Image Segmentation II

- Variational Image Segmentation
- Snakes
- Snakes: External Energy
- Snakes: Internal Energy
- Snakes: Gradient Descent
- Some Comments on the Snakes
- Problem with Initialization
- Possible solutions
- The Mumford-Shah Approach
- The Piecewise Constant Mumford-Shah
- Discrete Approximation
- Solution via Graph Cuts
- Ernst Ising
- The Piecewise Constant Mumford-Shah
- Mathematical Insights
- Euler-Lagrange Equations
- Euler-Lagrange Equations
- Euler-Lagrange Equations
- Minimizing the Mumford-Shah Functional
- Gradient Descent
- Gradient Descent with Length Regularity
- Implementations
- 2-normal Segmentations
- 2-normal Segmentations
- 2-normal Segmentations
- Multiscale Implementation

# 2-normal Segmentations

- Koepfler et al. define: A **2-normal segmentation** is a partitioning of the image plane  $\Omega$  into pairwise disjoint regions  $\Omega_1, \dots, \Omega_n$ , such that each segmentation obtained by merging two neighboring regions has a larger or equal energy (in the sense of the piecewise constant Mumford-Shah energy).
- The algorithm of Koepfler et al. allows to compute 2-normal segmentations. To this end it iteratively merges neighboring regions until convergence.
- Minima of the piecewise constant Mumford-Shah are always 2-normal segmentations. However: Not all 2-normal segmentations are minimizers of the Mumford-Shah functional.
- Two questions arise:
  - ◆ In which order should one merge neighboring regions?
  - ◆ How should one select the parameter  $\nu$ ?

## Image Segmentation II

- Variational Image Segmentation
- Snakes
- Snakes: External Energy
- Snakes: Internal Energy
- Snakes: Gradient Descent
- Some Comments on the Snakes
- Problem with Initialization
- Possible solutions
- The Mumford-Shah Approach
- The Piecewise Constant Mumford-Shah
- Discrete Approximation
- Solution via Graph Cuts
- Ernst Ising
- The Piecewise Constant Mumford-Shah
- Mathematical Insights
- Euler-Lagrange Equations
- Euler-Lagrange Equations
- Euler-Lagrange Equations
- Minimizing the Mumford-Shah Functional
- Gradient Descent
- Gradient Descent with Length Regularity
- Implementations
- 2-normal Segmentations
- 2-normal Segmentations
- 2-normal Segmentations
- Multiscale Implementation



# 2-normal Segmentations

- Proposition: The **number  $n$  of regions** of a 2-normal segmentation is **bounded** by the following function of the scale parameter  $\nu$ :

$$n \leq \frac{|\Omega| \text{osc}(I)^4}{c_0 \nu^2}.$$

$|\Omega| \equiv$  image size, and  $\text{osc}(I) \equiv \sup(I) - \inf(I)$  is called the *oscillation* of the brightness function (difference between largest and smallest brightness).

- In particular, this implies: The smaller  $\Omega$  and the larger  $\nu$ , the stronger the constraint on the number of regions.
- Thus, the scale parameter  $\nu$  defines the **spatial scale** on which segmentation is performed – on a coarse scale for large  $\nu$  and on a finer scale for smaller values of  $\nu$ .

## Image Segmentation II

- Variational Image Segmentation
- Snakes
- Snakes: External Energy
- Snakes: Internal Energy
- Snakes: Gradient Descent
- Some Comments on the Snakes
- Problem with Initialization
- Possible solutions
- The Mumford-Shah Approach
- The Piecewise Constant Mumford-Shah
- Discrete Approximation
- Solution via Graph Cuts
- Ernst Ising
- The Piecewise Constant Mumford-Shah
- Mathematical Insights
- Euler-Lagrange Equations
- Euler-Lagrange Equations
- Euler-Lagrange Equations
- Minimizing the Mumford-Shah Functional
- Gradient Descent
- Gradient Descent with Length Regularity
- Implementations
- 2-normal Segmentations
- 2-normal Segmentations
- 2-normal Segmentations
- Multiscale Implementation

# 2-normal Segmentations

- The individual segments of a 2-normal segmentation have a **positive minimal size**:

$$|\Omega_i| \geq c_1(I, \nu, \Omega) \quad \forall i.$$

In particular, this implies that the Mumford-Shah segmentation process (for  $\nu > 0$ ) leads to an **elimination of small regions**. In historical approaches this was introduced through a heuristic post-processing step.

- For every individual segment  $\Omega_i$  the length of its boundary  $\partial\Omega_i$  is bounded by a multiple of its area  $|\Omega_i|$ :

$$|\partial\Omega_i| \leq c_2(I, \Omega) |\Omega_i| \quad \forall i.$$

This implies that minimization of the Mumford-Shah functional (for  $\nu > 0$ ) also leads to an **elimination of elongated regions**.

## Image Segmentation II

- Variational Image Segmentation
- Snakes
- Snakes: External Energy
- Snakes: Internal Energy
- Snakes: Gradient Descent
- Some Comments on the Snakes
- Problem with Initialization
- Possible solutions
- The Mumford-Shah Approach
- The Piecewise Constant Mumford-Shah
- Discrete Approximation
- Solution via Graph Cuts
- Ernst Ising
- The Piecewise Constant Mumford-Shah
- Mathematical Insights
- Euler-Lagrange Equations
- Euler-Lagrange Equations
- Euler-Lagrange Equations
- Minimizing the Mumford-Shah Functional
- Gradient Descent
- Gradient Descent with Length Regularity
- Implementations
- 2-normal Segmentations
- 2-normal Segmentations
- 2-normal Segmentations
- 2-normal Segmentations
- Multiscale Implementation

# Multiscale Implementation

The implementation of Koepfler et al. allows to compute a 2-normal segmentation by the following region merging process:

1. Initialize: every pixel is its own region.
2. For all neighboring pairs of regions, compute the change  $\Delta E$  in energy obtained by merging the two regions. Obviously it is of the form:

$$\Delta E = \Delta E_{region} + \nu \Delta E_{length}$$

3. For all pairs of adjacent regions determine the value  $\hat{\nu}$ , for which there is an energy decrease ( $\Delta E < 0$ ). This value always exists because  $\Delta E_{length} < 0$  and  $\Delta E_{region} \geq 0$ .
4. In each step, merge the region pair with the smallest value of  $\hat{\nu}$ .
5. Repeat steps (2.) - (4.) until the desired number of regions or a sufficiently large value of  $\nu$  is reached.

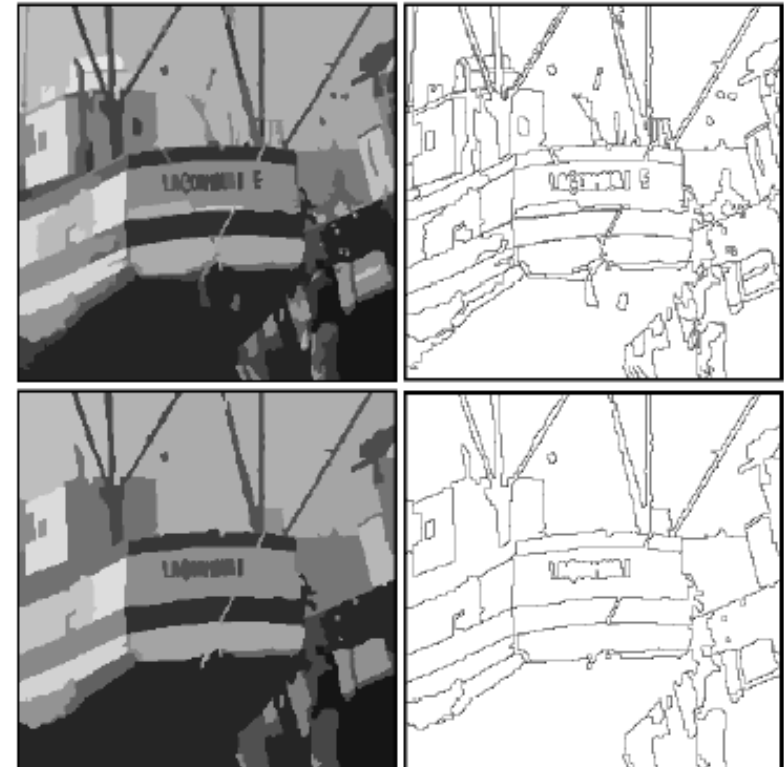
## Image Segmentation II

- Variational Image Segmentation
- Snakes
- Snakes: External Energy
- Snakes: Internal Energy
- Snakes: Gradient Descent
- Some Comments on the Snakes
- Problem with Initialization
- Possible solutions
- The Mumford-Shah Approach
- The Piecewise Constant Mumford-Shah
- Discrete Approximation
- Solution via Graph Cuts
- Ernst Ising
- The Piecewise Constant Mumford-Shah
- Mathematical Insights
- Euler-Lagrange Equations
- Euler-Lagrange Equations
- Euler-Lagrange Equations
- Minimizing the Mumford-Shah Functional
- Gradient Descent
- Gradient Descent with Length Regularity
- Implementations
- 2-normal Segmentations
- 2-normal Segmentations
- 2-normal Segmentations
- Multiscale Implementation

# Multiscale Implementation

## Image Segmentation II

- Variational Image Segmentation
- Snakes
- Snakes: External Energy
- Snakes: Internal Energy
- Snakes: Gradient Descent
- Some Comments on the Snakes
- Problem with Initialization
- Possible solutions
- The Mumford-Shah Approach
- The Piecewise Constant Mumford-Shah
- Discrete Approximation
- Solution via Graph Cuts
- Ernst Ising
- The Piecewise Constant Mumford-Shah
- Mathematical Insights
- Euler-Lagrange Equations
- Euler-Lagrange Equations
- Euler-Lagrange Equations
- Minimizing the Mumford-Shah Functional
- Gradient Descent
- Gradient Descent with Length Regularity
- Implementations
- 2-normal Segmentations
- 2-normal Segmentations
- 2-normal Segmentations
- Multiscale Implementation



Input and segmentation with  $\nu = 2022$  (above) and  $\nu = 6173$  (below)

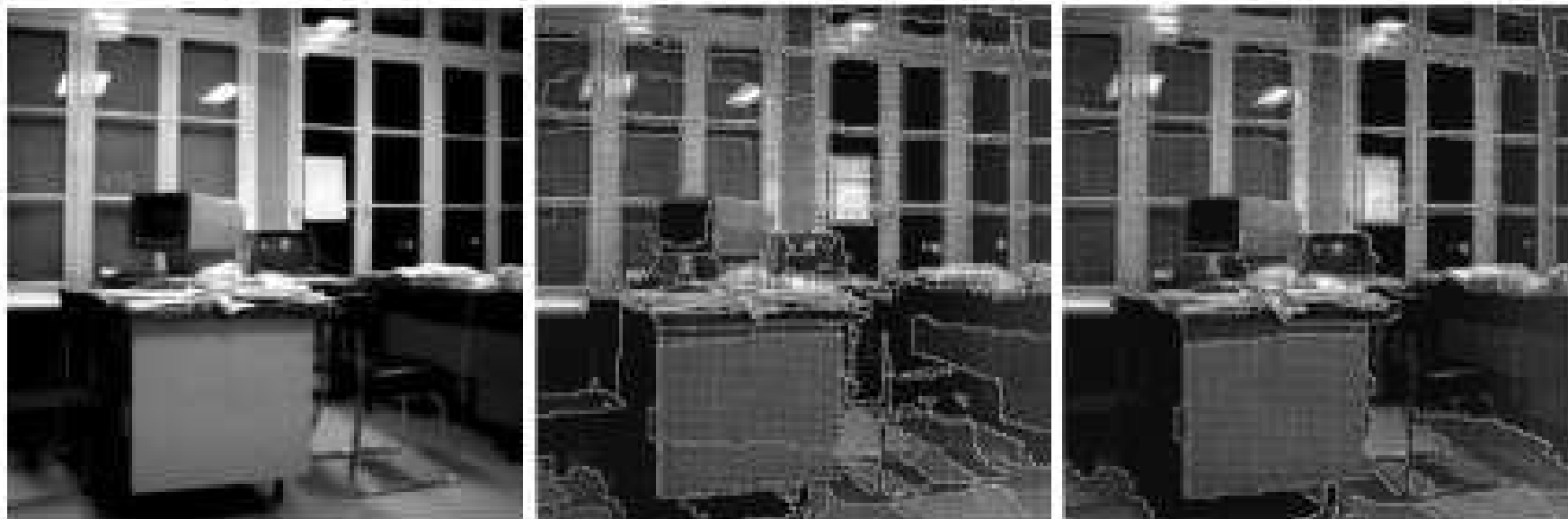
G. Koepfler et al., SIAM J. of Numer. Analysis, 1995

<http://www.math-info.univ-paris5.fr/~gk/papers/heidelberg95.pdf>

# Multiscale Implementation

## Image Segmentation II

- Variational Image Segmentation
- Snakes
- Snakes: External Energy
- Snakes: Internal Energy
- Snakes: Gradient Descent
- Some Comments on the Snakes
- Problem with Initialization
- Possible solutions
- The Mumford-Shah Approach
- The Piecewise Constant Mumford-Shah
- Discrete Approximation
- Solution via Graph Cuts
- Ernst Ising
- The Piecewise Constant Mumford-Shah
- Mathematical Insights
- Euler-Lagrange Equations
- Euler-Lagrange Equations
- Euler-Lagrange Equations
- Minimizing the Mumford-Shah Functional
- Gradient Descent
- Gradient Descent with Length Regularity
- Implementations
- 2-normal Segmentations
- 2-normal Segmentations
- 2-normal Segmentations
- Multiscale Implementation



Original and segmentation with  $\nu = 1024$  and  $\nu = 4096$

G. Koepfler, J.-M. Morel, S. Solimini

# Diffusion Snakes

The Diffusion Snakes minimize the functional

$$E(u, C) = \int_{\Omega} (I(x) - u(x))^2 dx + \lambda \int_{\Omega \setminus C} |\nabla u(x)|^2 dx + \nu \int_0^1 |C'(s)|^2 ds$$

by alternating two gradient descent evolutions:

$$\frac{\partial C(s, t)}{\partial t} = -\frac{\partial E}{\partial C} = \left( (I - u)^2 + \lambda |\nabla u|^2 \right) \vec{n} + 2\nu C'', \quad \vec{n} = \text{normal}$$

$$\frac{\partial u(x, t)}{\partial t} = -\frac{\partial E}{\partial u} = \lambda \nabla (w_c \nabla u) + (I - u), \quad \text{with } w_c(x) = \begin{cases} 0, & x \in C \\ 1, & \text{else} \end{cases}$$

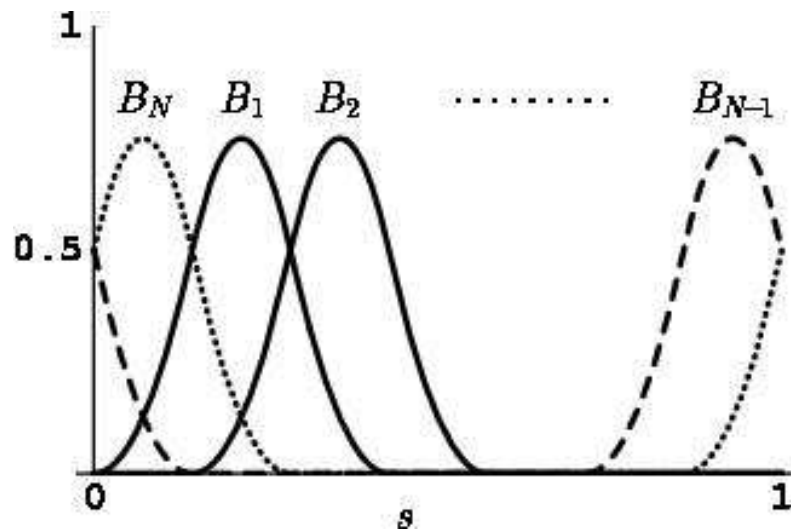
We therefore have a curve evolution in alternation with an inhomogeneous diffusion process (constant diffusion inside regions, no diffusion across boundary). Thus the diffusion snakes simultaneously perform denoising (in each of the separated regions) and boundary localization.

# Diffusion Snakes

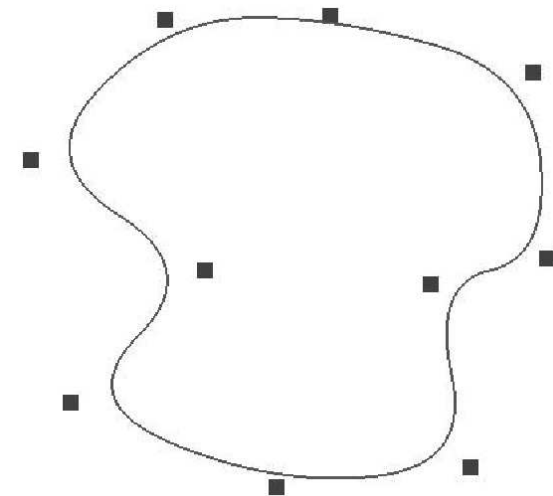
The evolution of the curve  $C$  is implemented by evolving a finite number of control points  $p_1, \dots, p_n \in \mathbb{R}^2$ :

$$C(s, t) = \sum_{i=1}^n p_i(t) B_i(s).$$

Here  $B_i(s)$  are spline basis functions:



spline basis functions



Spline & control points

# Diffusion Snakes

## Image Segmentation II

- Variational Image Segmentation
- Snakes
- Snakes: External Energy
- Snakes: Internal Energy
- Snakes: Gradient Descent
- Some Comments on the Snakes
- Problem with Initialization
- Possible solutions
- The Mumford-Shah Approach
- The Piecewise Constant Mumford-Shah
- Discrete Approximation
- Solution via Graph Cuts
- Ernst Ising
- The Piecewise Constant Mumford-Shah
- Mathematical Insights
- Euler-Lagrange Equations
- Euler-Lagrange Equations
- Euler-Lagrange Equations
- Minimizing the Mumford-Shah Functional
- Gradient Descent
- Gradient Descent with Length Regularity
- Implementations
- 2-normal Segmentations
- 2-normal Segmentations
- 2-normal Segmentations
- Multiscale Implementation



$\nu$  large



$\nu$  small

D. Cremers et al., Int. J. of Computer Vision, 2002